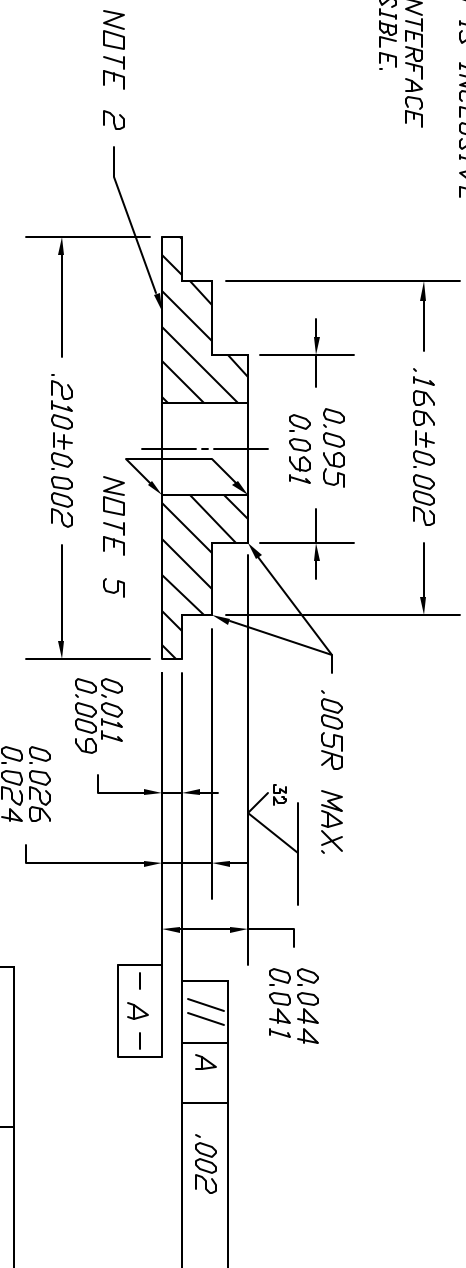
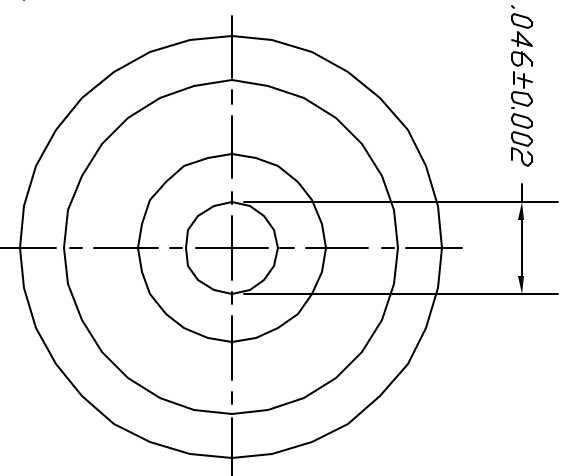


- NOTES:
1. .046 DIA. TO BE CONCENTRIC TO .093 DIA AND .166 DIA. WITH .003 T.I.R.
 2. THIS SURFACE OF EYELET TO BE FLAT WITHIN .002 T.I.R.
 3. PARTS SHOULD NOT HAVE DEEP GOUGES SCORE LINES OR TEARDROPS.
 4. .001 MAX. BURR IS ALLOWED AND IS INCLUSIVE OF DIMENSIONS.
 5. BURRS NOT ALLOWED AT THIS INTERFACE. .003 MAX CORNER BREAK PERMISSIBLE.



0.044	0.041	.002
	A	
- A -		

DRAWN BY: K.H.E.	TOLERANCE 3 PLACES ±.002	MATERIAL: KDVVAR	PART NUMBER: M9270-01-KVR	CHECKED BY:	REV. DATE
DATE: 9/23/99	ANGLES +5°	SCALE: 10:1 DID NOT SCALE	TITLE: M9270-01-KV.R.DWG	DATE:	REV. DATE 8/23/02
					REV. DATE 8/23/02

8/23/02	23374	B
DATE.	ECR.	REV

A.T. Wall Company
 55 Service Avenue
 Warwick, RI 02886
 (401) 739-0740
 Fax (401) 732-5784